

Welcome  
to  
NAGASAKI


# DISCOVER NAGASAKI

Gateway to Japan



[www.discover-nagasaki.com](http://www.discover-nagasaki.com)

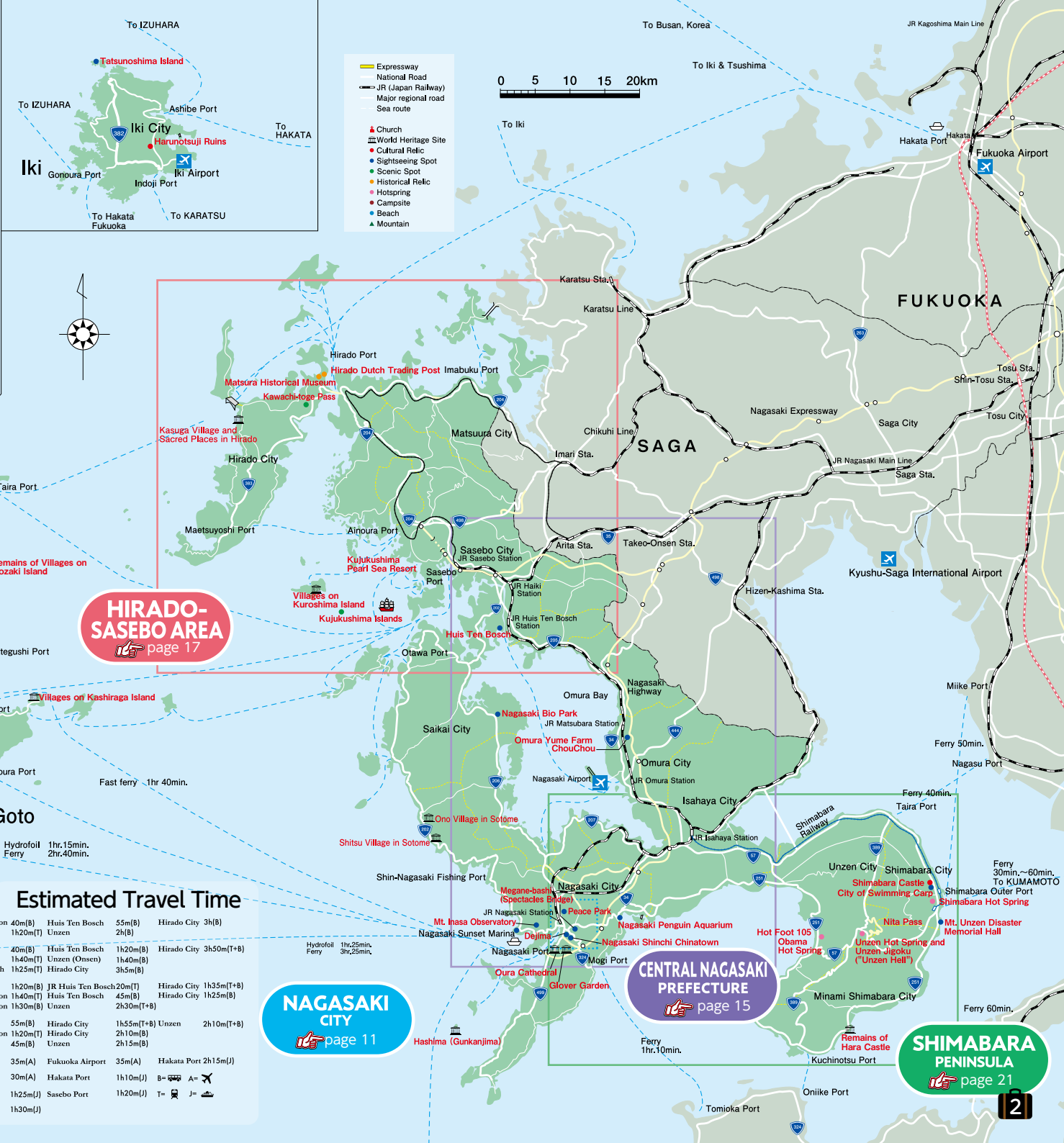
 @visitnagasaki

 #discover\_nagasaki

 Nagasaki  
tabinet

# About Nagasaki Prefecture (Overview)

Nagasaki Prefecture is surrounded on all sides by the sea and mountains; its cities and many islands are blessed with beautiful nature, and it is steeped in history, tradition and culture. The prefecture consists of 5 areas; Nagasaki City and Sotome Areas, Hirado/Sasebo Area, Central Nagasaki Area, Shimabara Peninsula and the Outer Islands. Nagasaki has its own international airport and features the most islands in Japan accessible by boat or plane. A JR line and numerous other private railways can carry you across the prefecture, with bus services offering access to locations without train lines.



**THE OUTER ISLANDS**  
page 29

**HIRADO-SASEBO AREA**  
page 17

**CENTRAL NAGASAKI PREFECTURE**  
page 15

**SHIMABARA PENINSULA**  
page 21

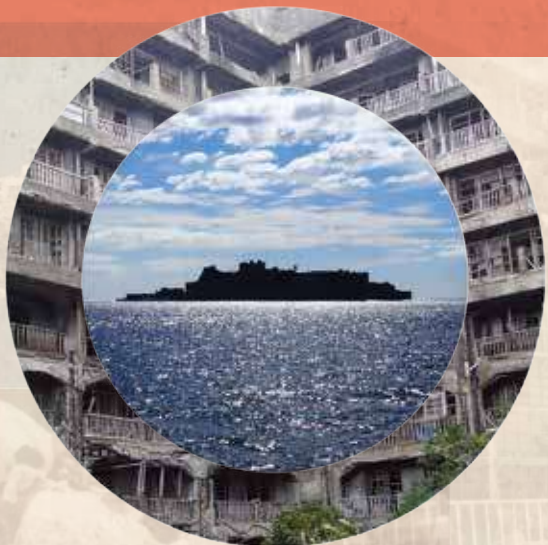
## Estimated Travel Time

JR Nagasaki Station	40m(B)	Huis Ten Bosch	55m(B)	Hirado City	3h(B)
JR Sasebo Station	1h20m(T)	Unzen	2h(B)		
Nagasaki Airport	40m(B)	Huis Ten Bosch	1h20m(B)	Hirado City	3h50m(T+B)
JR Nagasaki Station	1h40m(T)	Unzen (Onsen)	1h40m(B)		
JR Huis Ten Bosch	1h25m(T)	Hirado City	3h5m(B)		
Nagasaki Airport	1h20m(B)	JR Huis Ten Bosch	20m(T)	Hirado City	1h35m(T+B)
JR Nagasaki Station	1h40m(T)	Huis Ten Bosch	45m(B)	Hirado City	1h25m(B)
JR Sasebo Station	1h30m(B)	Unzen	2h30m(T+B)		
Nagasaki Airport	55m(B)	Hirado City	1h55m(T+B)	Unzen	2h10m(T+B)
JR Nagasaki Station	1h20m(T)	Hirado City	2h10m(B)		
JR Sasebo Station	45m(B)	Unzen	2h15m(B)		
Nagasaki Airport	35m(A)	Fukuoka Airport	35m(A)	Hakata Port	2h15m(J)
Nagasaki Airport	30m(A)	Hakata Port	1h10m(J)		
Nagasaki Port	1h25m(J)	Sasebo Port	1h20m(J)		
Sasebo Port	1h30m(J)				



# UNESCO WORLD HERITAGE

Many important sites from the rich history of Nagasaki have been recognized as UNESCO World Heritage, such as (1) *Sites of Japan's Meiji Industrial Revolution* (listed in 2015), and (2) *the Hidden Christian Sites in the Nagasaki Region* (listed in 2018).



## (1) Sites of Japan's Meiji Industrial Revolution (Iron and Steel, Shipbuilding, and Coal mining industries)

A total of 8 sites in Nagasaki have been included.

- |   |                                       |
|---|---------------------------------------|
| 1. Hashima Coal Mine                      | 5. Mitsubishi Former Pattern Shop     |
| 2. Glover House and Office                | 6. Mitsubishi No. 3 Dry Dock*         |
| 3. Takashima Coal Mine                    | 7. Mitsubishi Giant Cantilever Crane* |
| On the Mitsubishi Nagasaki Shipyard site: | 8. Mitsubishi Senshokaku Guest House* |
| 4. Kosuge Slip Dock                       | *not open to the public               |



## (2) Hidden Christian Sites in the Nagasaki Region The 12 sites include:

1. Remains of Hara Castle
2. Kasuga Village and Sacred Places in Hirado (Kasuga Village and Mt. Yasumandake)
3. Kasuga Village and Sacred Places in Hirado (Nakaenoshima Island)
4. Sakitsu Village in Amakusa
5. Shitsu Village in Sotome
6. Ono Village in Sotome
7. Remains of Villages on Nozaki Island
8. Villages on Kashiragashima Island
9. Egami Village on Naru Island (Egami Church and its Surroundings)
10. Villages on Hisaka Island
11. Villages on Kuroshima Island
12. **Oura Cathedral**

## LITERARY WORKS & MEDIA RELATED TO NAGASAKI

## (UNESCO SITES IN FILM)



3 | 1900s

1991

2003

2013

2012

2016

4



# Activities



Mikawachi Ceramics  
Painting

Paint Mikawachi Ceramics popular with royalty abroad.



Hasami Handmade  
Ceramics

Join a pottery class at Mt. Nakao's Denshukan in Hasami.



Sasebo Spinning  
Top Painting

Paint your own Sasebo Koma (Spinning Top) and learn to master the throwing technique.



Minamishimabara  
Dolphin watching

99% probability of seeing wild dolphins



Nagasaki Bio Park

Interact with adorable animals at Nagasaki Bio Park.



Hiking in Unzen

Hike up Mt. Fugendake in Unzen to see Japan's most recently formed mountain and active volcano.



Snorkeling and  
Diving

Snorkel or dive and explore coral reefs around Nagasaki.



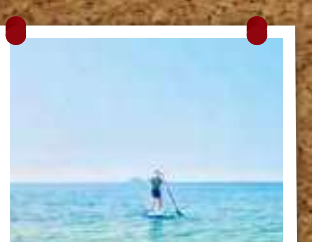
Olle Trail Course

Follow the Hirado or Minamishimabara Olle Course through beautiful landscape.



Traditional Indigo Dyeing  
Experience

Choose from a selection of cotton materials, and then design and dye your own creation at Aiakane Kobo.



Stand-Up Paddleboarding

Take a class for Stand-Up Paddleboarding in Saikai City or on Tsushima Island.



Nagasaki Penguin  
Aquarium

See the world's greatest variety of penguins swim in the sea at Nagasaki Penguin Aquarium.



Pearl Picking

Pick pearls at Kujukushima Pearl Sea Resort.



Kanzarashi-Making

Make your own Kanzarashi, a sweet Shimabara speciality



Chinshin Style Tea  
Ceremony

A samurai-style tea ceremony developed in Nagasaki



Kimono Rental

Put on a kimono at Dejima and take a stroll back in time.



Sailing

Sailing or Cruising at the National Park, Kujukushima Pearl Sea Resort.



# A TASTE OF NAGASAKI

## NAGASAKI WAGYU BEEF

長崎牛



The National Japanese Beef Quality Competition (aka Wagyu Olympics) is held every 5 years, with Nagasaki winning first place in 2012. Nagasaki wagyu beef is tender and mouth-wateringly delicious; a must for meat lovers.

## SEAFOOD

魚介



Nagasaki hauls in the second largest total catch of fish in Japan, with a wide variety of species available in each season such as lobster, horse mackerel, red sea bream, puffer fish, and squid. There are numerous gourmet events for seafood enthusiasts.

## SHIPPOKU

卓袱



Developed in the Edo period, *Shippoku* is a fusion cuisine consisting of traditional Japanese, Chinese, and Western influences. Shippoku is a very formal style of dining and is often served in high-end restaurants.

## OYSTERS

牡蠣



During fall and winter, one can enjoy delicious barbecued oysters at little huts along the coast, or have them steamed over natural hot springs in Obama, or at the Oyster Festivals in Kujukushima, Sasebo.

## GUZONI

具雑煮



A Shimabara specialty dish made with mochi rice cakes, and over ten kinds of fresh local ingredients that are cooked together in a delicate broth. Eaten by locals on special occasions, like New Year's Day, recipes vary from household to household. Try *guzoni* for yourself at a local restaurant!

## SASEBO BURGER

佐世保バーガー



Introduced by American sailors in the 1950s, this American-Japanese fusion burger is famous across Japan. The people of Sasebo adapted the recipe to create their own style of burger and there are now many registered Sasebo burger restaurants in the region.

## CHAMPON & SARA-UDON

ちゃんぽん&皿うどん



Champion is a noodle dish packed with vegetables, pork, and seafood in a rich creamy broth. The dish was created in the Meiji Period by a local Chinese restaurant trying to provide a low-cost, highly nutritious dish for local Chinese students. Sara-udon, another specialty dish, is served with either thin crispy noodles, or thick noodles.

## CASTELLA

カステラ



A sweet and moist sponge cake that was first introduced by the Portuguese missionaries in the mid 1600s. The recipe was customized by the people of Nagasaki and is now a popular treat all over Japan.

## GOTO TENOBE UDON

五島うどん



Hand-stretched noodles infused with locally-produced camellia oil, then naturally dried. Made on the islands of Goto, this udon is one of the three most famous udon noodles in Japan. Goto Udon are thinner than other kinds of udon, and are sometimes referred to as *maboroshi no udon* (lit. phantom noodles).

## OMURA SUSHI

大村寿司



Layers of sweet vinegared rice alternating with slices of fish and finely chopped vegetables; this specialty was first served to feudal lords in Omura returning from victorious battle. Omura Sushi became a dish for special occasions and welcoming guests, and can now be bought in restaurants.

## TURKISH RICE

トルコライス



Turkish Rice is a Western-inspired dish from Nagasaki City. This dish consists of pilaf rice, spaghetti, and pork or beef cutlets generously covered in sauce. Each restaurant uses slightly different ingredients and toppings. While known as Turkish Rice, it was not inspired by Turkish cuisine.

## SAKE & IKI SHOCHU

酒&焼酎



*Nagasaki Junmai Ginjo Sake* is a premium brand of sake made from Koji rice that uses a special type of yeast during the fermentation process. *Iki Shochu*, awarded "Geographical Indication" by the World Trade Organization, is among the world's top liquors.

## FRUITS



Each season yields its own juicy delight. Delicate loquats thrive in the warm climate of Nagasaki. As it gets colder, mikan, a Japanese mandarin orange is also popular, and can be easily found in local markets.



# EVENT CALENDAR

Festivals in Nagasaki are well-loved by the locals, and also attract both domestic and international tourists throughout the year. With historical influences from places like China, Korea and Europe, each festival has its own distinct characteristics and tradition that have been passed down from one generation to the next.

For more information on events, please visit our website

[www.discover-nagasaki.com/spots/events](http://www.discover-nagasaki.com/spots/events)



02  
FEB

**NAGASAKI LANTERN FESTIVAL**  
15,000 Chinese paper lanterns and a multitude of large displays fill the city with light during this festival.

03  
MAR

**OMURA FLOWER FESTIVAL with CHERRY BLOSSOMS**  
Late Mar. to Mid-April, Omura City

01  
JAN

**NOMOZAKI NARCISSUS FESTIVAL**  
Early to late Jan., Nagasaki City

04  
APR

**GIRL'S FESTIVAL in SHIMABARA CASTLE TOWN**  
Late Jan. to Early Mar., Shimabara City

**HUIS TEN BOSCH TULIP FESTIVAL**  
Early Mar. to Early Apr., Sasebo City

05  
MAY

**NAGASAKI TALL SHIPS FESTIVAL**  
Late Apr., Nagasaki City

**HUIS TEN BOSCH ROSE FESTIVAL**  
Late Apr. to Early June, Sasebo City

06  
JUN

**OMURA FLOWER FESTIVAL with IRISES**  
Late May to Early June, Omura City

07  
JUL

**HASAMI, MIKAWACHI PORCELAIN FESTIVAL**  
Late Apr. to Early May, Hasami Town and Sasebo City

08  
AUG

**NAGASAKI HYDRANGEA FESTIVAL**  
Late May to Early June, Nagasaki City

09  
SEP

**ONIKI RICE CROP HARVEST & SCARECROW FESTIVAL**  
Late Sept., Hasami Town

10  
OCT

**NAGASAKI HARBOR FESTIVAL / NAGASAKI PEIRON CHAMPIONSHIP**  
Late July, Nagasaki City

**EMUKAE SENTOUROU LANTERN FESTIVAL**  
Late Aug., Sasebo City

12  
DEC

**THE HUIS TEN BOSCH KINGDOM OF LIGHT**  
With 10 million LED lights, this is the biggest illumination festival in the world - but still energy conscious!

11  
NOV

**MARUYAMA HANA FESTIVAL**  
Mid-Nov., Nagasaki City

The sacred dances performed at Suwa Shrine are a rare sight among traditional Japanese festivals thanks to the influence of Chinese and Dutch culture, and have been designated a significant intangible folk cultural asset.

**NAGASAKI KUNCHI FESTIVAL**  
7th to 9th of Oct., Nagasaki City





# NAGASAKI CITY

## Streetcar MAP

### Overview

Nagasaki City has a great public transport network. There is a JR line to bring you into the city and from there you have access to bus services and an easy-to-use tram network that can take you right across the town. Many of Nagasaki's attractions can be accessed by tram, including Suwa Shrine, the Peace Park and Oura Cathedral.

### GETTING AROUND WITH A ONE DAY PASS

#### NAGASAKI CITY: ONE DAY PASS for the Streetcar

##### Getting around by Streetcar:

The Streetcar is a flat rate tram service that offers access to most of the major tourist attractions in Nagasaki City. Each ride costs only 130 yen for adults and 70 yen for children from ages 6-11. Board the streetcar (from the back entrance), and pay the exact fare when you alight (from the front door).

##### One Day Pass:

A One Day Pass priced at 500 yen entitles travelers to an unlimited number of rides on the Streetcar for the day of purchase.

##### Where to buy:

One Day Passes are sold at the Tourist Information Center (ground floor of JR Nagasaki Station), and at most hotels, among other selected places. Please note that you cannot buy the pass on the streetcar itself.

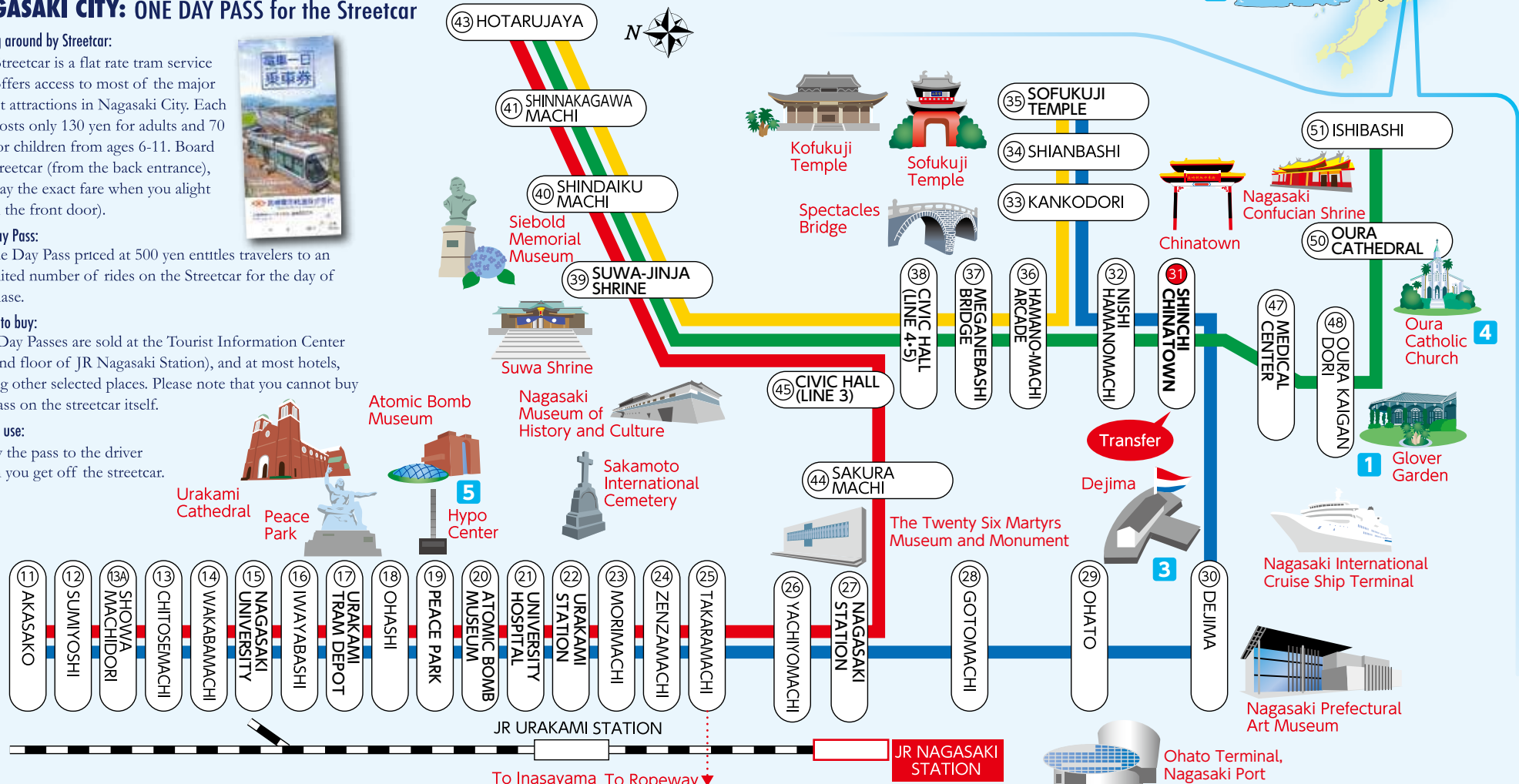
##### How to use:

Show the pass to the driver when you get off the streetcar.

NUMBER	COLOR	STOP TO STOP (VIA)
1	Blue	AKASAKO TO SOFUKUJI-TEMPLE (NISHI-HAMANOMACHI)
3	Red	AKASAKO TO HOTARUJAYA (SAKURAMACHI)
4	Yellow	SOFUKUJI-TEMPLE TO HOTARUJAYA (NISHI-HAMANOMACHI)
5	Green	ISHIBASHI TO HOTARUJAYA (NISHI-HAMANOMACHI)

¥130 single ride (exact change only)

¥500 One Day Pass



Streetcar MAP NAGASAKI CITY





グラバー園



### 1 GLOVER GARDEN

World Heritage Site, since 2015

Designated as an Important Cultural Asset of Japan, Glover Garden is home to the traditional mansions of British merchants, and the oldest Western-style wooden house in Japan built by Thomas Glover. Glover House and Office is a World Heritage Site, acknowledging the important role Glover played in Japan's Meiji Industrial Revolution. The garden commands a stunning view of Nagasaki Port and is flush with flowers.



端島(軍艦島)



### 2 HASHIMA (Gunkanjima)

World Heritage Site, since 2015

Hashima, is a World Heritage Site, popularly known as Gunkanjima due to its silhouette's resemblance to a battleship. Its coal mining industry made vital contributions to the development of modern Japanese industries. In its heyday, Hashima's population density was one of the highest in the world, but the island has since become deserted after the mine closed. Today, various guided tours to Hashima are offered by boat, offering an up-close look at the abandoned site.



出島

### 3 DEJIMA

Dejima is an artificial fan-shaped island that served as the location for the Dutch East India Company's trading post. It was the only port for commercial and cultural exchange with the West for over 200 years during Japan's isolation period. Some of the former residences have been restored to their former glory using traditional Edo period construction methods and have been turned into museums. Try on a kimono and go back in time as you take a walk through Dejima.



大浦天主堂



### 4 OURA CATHEDRAL

World Heritage Site, Since 2018

The former Oura Cathedral is the oldest existing church and the first and only Minor Basilica in Japan. Built by missionaries from the Paris Foreign Missions Society and Japanese architects who had never seen Western churches, the first hidden Christians historically professed their faith here in 1865. Oura Cathedral is also open as a popular tourist location and features a museum for Nagasaki's Christian history.



The Atomic Bomb Hypocenter 原爆落下中心地

### 5 PEACE HILL / PEACE PARK / NAGASAKI ATOMIC BOMB MUSEUM

The atomic bomb dropped on August 9, 1945 devastated the city. Every year, the Peace Ceremony is held at the Peace Park located on Peace Hill. A stroll through the park will take you through the display of art works donated by countries all over the world in support of the city's prayer for peace. At the Hill, you will also find the Atomic Bomb Hypocenter, the Nagasaki Atomic Bomb Museum, ruins of the bombed-bell tower of the former Urakami Cathedral, Sanno Shrine's one-legged torii arch and camphor trees that sustained damage but survived the bombing, a museum inside the bombed school building of Shiroyama Elementary and other relics. This area symbolizes Nagasaki's strong desire to spread its message of world peace.



Peace Park 平和公園



長崎原爆資料館  
Nagasaki Atomic Bomb Museum

### IOJIMA ISLAND

This beautiful resort island can easily be accessed via a twenty minute ferry ride, or a fifty minute bus ride from Nagasaki Station.



アイランドルミナ

### 6 ISLAND LUMINA

Located on the island of Iojima, this one-hour adventure takes place through a gentle-sloping forest path filled with magical lights, motion pictures, and digital art using state-of-the-art technologies. Island Lumina can easily be accessed via free shuttle bus from Shimakaze no Yu (hot spring facility) on Iojima Island. Double the fun with glow-in-the-dark face paint prior to entering the enchanted forest.

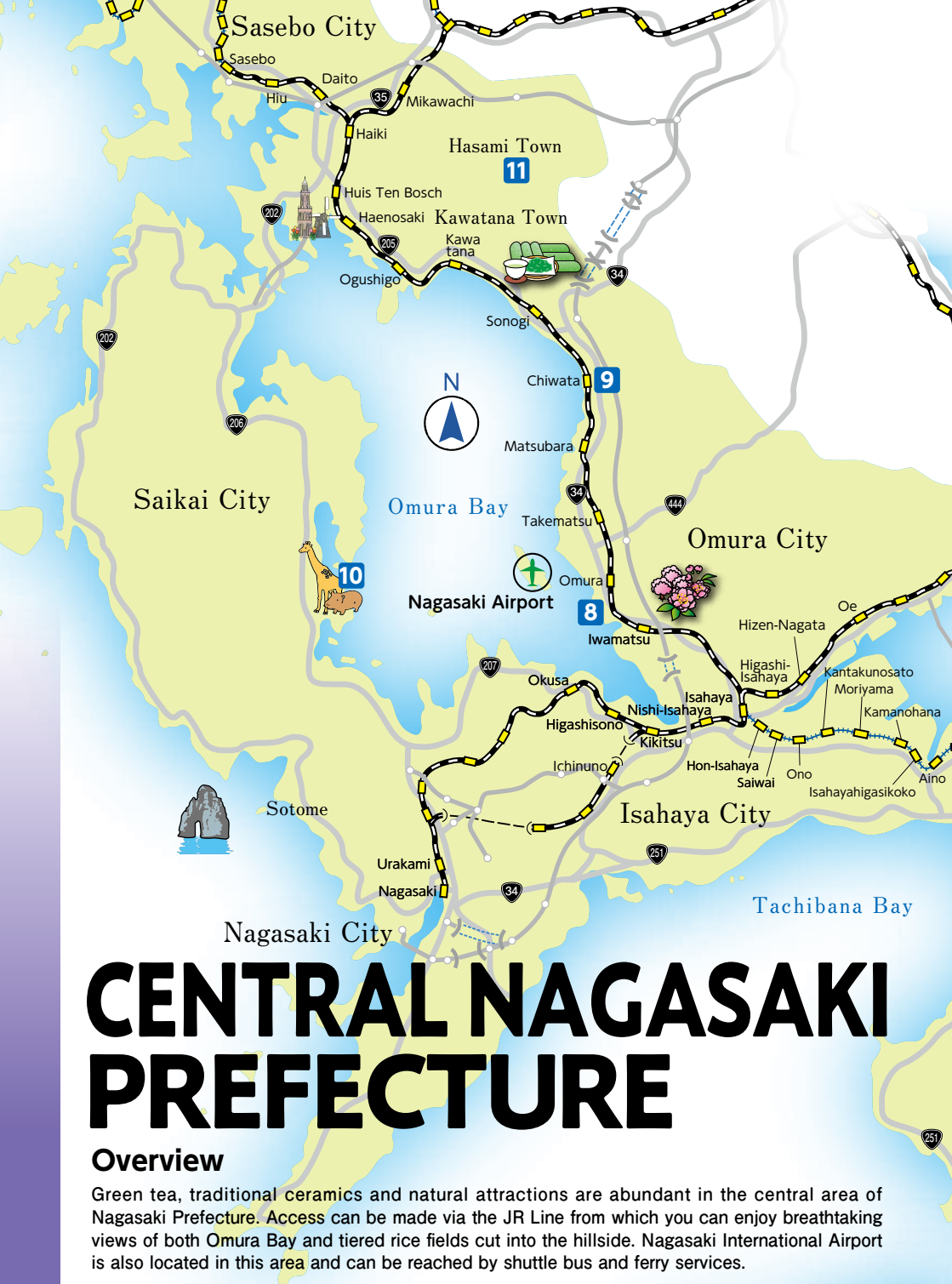


伊王島 - Costa Del Sol

### 7 COSTA DEL SOL

"Costa del Sol" meaning "coast of sun" in Spanish is a popular destination for families and beach-goers in the summer. Known for its gentle waves and soft golden sand, there is also beach equipment and barbecue rental available on site.





# CENTRAL NAGASAKI PREFECTURE

## Overview

Green tea, traditional ceramics and natural attractions are abundant in the central area of Nagasaki Prefecture. Access can be made via the JR Line from which you can enjoy breathtaking views of both Omura Bay and tiered rice fields cut into the hillside. Nagasaki International Airport is also located in this area and can be reached by shuttle bus and ferry services.



大村公園

### 8 OMURA PARK (KUSHIMA CASTLE RUINS)

Built over the outer moat of the former Kushima Castle, Omura Park is now famous for its 2000 cherry blossom trees, including the species called Omura-zakura cherry blossom. This particular type of cherry blossom has flowers with between 60 to 100 petals on average, and is a Nationally Designated Natural Monument. In late spring to early summer, some 300,000 irises also bloom in the park.

WALK from Omura Sta.



千綿駅

### 9 CHIWATA STATION

A retro wooden station sitting on the edge of Omura Bay, Chiwata Station is a great photo spot, drawing in many photography enthusiasts. The view of the setting sun across Omura Bay from the station is particularly attractive. Inside that station itself is a small yet inviting café, the Chiwata Shokudou or Sea View Dining Room. At a nearby café, you can compare the scent and flavors of the green tea from several local tea farms. The area is famous for green tea tourism, so of course delicious green tea lattes and desserts are also on offer around town.



長崎バイオパーク

### 10 NAGASAKI BIO PARK

At Nagasaki Bio Park you can interact with and feed almost every animal in the park! Squirrel monkeys, capybaras, wallabies, llamas, tapirs, prairie dogs and a whole lot more! Set in beautiful Saikai City, Nagasaki, this Bio Park is surrounded by mountains and forests. Every consideration has been made and every detail of the animal's natural habitats have been carefully researched to ensure maximum comfort and it really shows!

BUS from Nagasaki Sta. or Huis Ten Bosch



波佐見町

### 11 HASAMI TOWN

Since the Edo Period, Hasami has been renowned for its ceramics. Descendants of those potters still live in the town and Hasami-yaki ceramics are still famous across Japan and the world today. Visitors can join in the ceramics festival or try hands-on workshops. Set amongst green hills and luscious tea fields, Japanese style buildings with refurbished interiors have been turned into incredibly charming cafes, stores and galleries – without losing that quaint Japanese village charm.

BUS from Nagasaki Sta. or Kawatana Sta.



# HIRADO-SASEBO AREA

## Overview

The northern area of Nagasaki Prefecture is full of natural beauty and stunning historical locations. The JR Lines run to Sasebo City and from there you can take either a bus or the private Matsuura Railway Line north to Hirado. The port city of Sasebo also offers ferry services to the Outer Islands.



海きらら九十九島水族館

## 13 KUJUKUSHIMA AQUARIUM UMI-KIRARA

Umi-Kirara presents the marine creatures that inhabit the nearby seas. There is also a huge outdoor aquarium, the Kujukushima Bay Large Aquarium. Sunlight scatters through the water showcasing the sea in its natural state, creating the illusion of being under the sea. Another highlight is the Jellyfish Symphony Dome, a light show accompanied by music featuring jellyfish living in the local waters.

九十九島



## 14 KUJUKUSHIMA (Ninety-nine Islands)

Approximately two hundred and eight islands dot the sparkling sea in this pristine National Park. Underneath the waters dwell a great variety of marine life and treasures like pearls and oysters. The picturesque evening view from one of the observatories appeared in the movie 'The Last Samurai', as a symbol of Japanese coastal beauty.



九十九島パールシーリゾート

## 12 KUJUKUSHIMA PEARL SEA RESORT

The Kujukushima Pearl Sea Resort offers a selection of cruises that will take you through the islands. Bask on the deck of the cruise ships and enjoy the enchanting views. For the adventurous, there are also kayaks and yachts available. Navigate through the gentle waters of Kujukushima and discover for yourself the beauty of these islands.







ハウステンボス

### 15 HUIS TEN BOSCH

A sprawling waterfront resort modeled after a Dutch town, this exquisite park is adorned with flowers lining the streets of elegant brick houses. The park houses six kingdoms, featuring themes of flowers, light, games, music and shows, health and beauty, and robots. Highlights include seasonal flower displays, a world-class light show and incredible VR attractions. Visitors may also check-in at the world's first robot hotel, Henn-na Hotel, with dinosaur robots working at the front desk. The Robot Kingdom also hosts robot shows, has a robot restaurant and, more recently, a robot bar.

**TRAIN** Huis Ten Bosch Sta.



平戸城

### 16 HIRADO CASTLE

Offering spectacular views of the town, port and surrounding blue waters, Hirado Castle (aka Kameoka Castle) was the stronghold of the ruling Matsuura Clan. The original castle, called Hinotake Castle, was burnt down in order to gain the trust of the Tokugawa shogunate and the rebuilt castle, like most castles in Japan, was demolished during the Meiji Restoration. The carefully reconstructed castle exhibits many artifacts relating to Hirado and the Matsuura family, and the view from the top is something not to be missed.

**BUS** Get off at Tabira-Hiradoguchi, then local bus to Hirado



松浦史料館

### 17 MATSURA HISTORICAL MUSEUM

The Matsuura Historical Museum houses the impressive residence of the Matsuura Clan, who ruled from the 12th to 19th century, and prospered through international trade. Inside the museum, you can enjoy the treasures of the Matsuura and try on samurai armor or Japanese kimono. You can also taste the original warrior-style green tea and authentic sweets with 400 years of tradition at a thatch-roofed tea ceremony house located at the side, while listening to the sounds of the birds and the swaying of bamboo.



教会と寺院の見える風景

### 18 VIEW OF A CHRISTIAN CHURCH AND JAPANESE TEMPLES

Here you can enjoy the rare view of a Christian church set against the traditional Japanese tiled roofs of the Buddhist temples in the foreground. The emerald green and white of the St Francis Xavier Memorial Church in contrast with the beauty of the Japanese style Zuiun-ji Zen Temple has been described by Lonely Planet as "one of the most photogenic vantage points in all of Kyushu." This scene perfectly represents the culture of Hirado and of Nagasaki.

# MATSUURA RAILWAY

URL <http://matutetu.com/> (Japanese)



## ■ SASEBO-IMARI Time Table

SASEBO	佐世保	548	643	704	805	925	1018	1123	1223	1323	1423
AINOURA	相 浦	619	715	736	837	958	1055	1155	1255	1355	1455
SAZA	佐 々	637	727	747	903	1009	1109	1208	1308	1408	1508
EMUKAE-SHIKAMACHI	江迎鹿町	706	752	822	928	1032	1133	1232	1332	1432	1532
NISHI-TABIRA	西田平	715	801	831	937	1041	1142	1241	1341	1441	1541
TABIRA-HIRADOGUCHI	たびら平戸口	738	805	848	948	1048	1148	1248	1348	1448	1550
MATSUURA	松 浦	804		920	1017	1117	1217	1317	1417	1515	1617
TAKASHIMA-GUCHI	鷹島口	815		930	1028	1128	1228	1328	1428	1526	
IMABUKU	今 福	817		933	1032	1131	1231	1331	1431	1528	
IMARI	伊万里	842		958	1057	1155	1257	1355	1455	1553	1655

SASEBO	佐世保	1453	1513	1613	1653	1713	1813	1850	1923	2128	
AINOURA	相 浦	1526	1546	1646	1726	1746	1846	1922	1956	2201	
SAZA	佐 々	1538	1604	1700	1738	1800	1902	1938	2009	2213	
EMUKAE-SHIKAMACHI	江迎鹿町	1601	1632	1727	1801	1826	1929	2002	2034	2237	
NISHI-TABIRA	西田平	1610	1641	1736	1810	1835	1938	2011	2043	2246	
TABIRA-HIRADOGUCHI	たびら平戸口	1614	1645	1739	1813	1848	1948	2014	2048	2249	
MATSUURA	松 浦		1713	1804		1919	2019		2119		
TAKASHIMA-GUCHI	鷹島口					1930	2030		2130		
IMABUKU	今 福					1932	2032		2132		
IMARI	伊万里		1753	1840		1959	2059		2157		

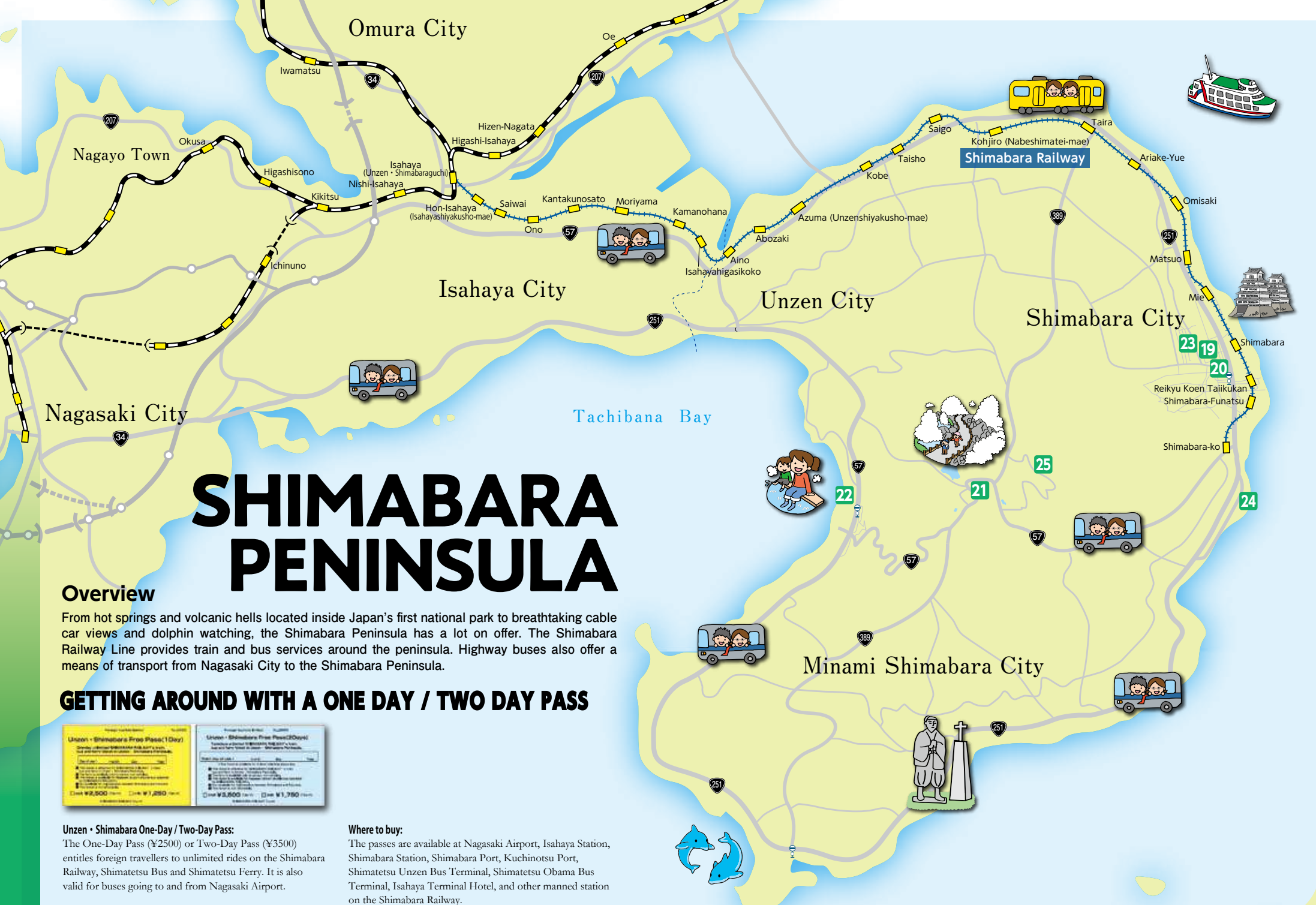
## ■ IMARI-SASEBO Time Table

IMARI	伊万里		542	707		842	1007	1136	1240	1336	1436
IMABUKU	今 福		607	732		907	1033	1203	1305	1403	1502
TAKASHIMA-GUCHI	鷹島口		610	734		910	1035	1205	1307	1405	1505
MATSUURA	松 浦		620	745		921	1052	1222	1322	1422	1522
TABIRA-HIRADOGUCHI	たびら平戸口	550	645	810	847	948	1118	1248	1348	1448	1547
NISHI-TABIRA	西田平	554	649	814	851	952	1122	1252	1352	1452	1551
EMUKAE-SHIKAMACHI	江迎鹿町	603	701	823	900	1001	1132	1301	1401	1501	1601
SAZA	佐 々	632	732	858	929	1026	1156	1326	1426	1526	1626
AINOURA	相 浦	643	745	909	940	1037	1207	1337	1437	1536	1636
SASEBO	佐世保	718	819	938	1010	1107	1238	1408	1508	1607	1707

IMARI	伊万里		1533	1603	1703	1725		1841		1942	
IMABUKU	今 福		1600	1630	1729	1749		1907		2007	
TAKASHIMA-GUCHI	鷹島口		1602	1633	1731	1752		1909		2009	
MATSUURA	松 浦		1616	1648	1743	1816		1922		2024	
TABIRA-HIRADOGUCHI	たびら平戸口	1620	1645	1715	1813	1843	1917	1947	2022	2052	
NISHI-TABIRA	西田平	1624	1649	1719	1817	1847	1921	1951	2025	2056	
EMUKAE-SHIKAMACHI	江迎鹿町	1633	1658	1728	1826	1856	1929	2001	2034	2105	
SAZA	佐 々	1706	1726	1806	1849	1922	1956	2028	2059	2132	
AINOURA	相 浦	1716	1736	1816	1900	1937	2006	2038	2110	2143	
SASEBO	佐世保	1747	1809	1847	1937	2009	2042	2113	2142	2213	

Timetable as of March 2019. The information above is subject to change. Please contact information centers for updated information. (Telephone numbers are on the back)





# SHIMABARA PENINSULA

## Overview

From hot springs and volcanic hells located inside Japan's first national park to breathtaking cable car views and dolphin watching, the Shimabara Peninsula has a lot on offer. The Shimabara Railway Line provides train and bus services around the peninsula. Highway buses also offer a means of transport from Nagasaki City to the Shimabara Peninsula.

## GETTING AROUND WITH A ONE DAY / TWO DAY PASS



### Unzen • Shimabara One-Day / Two-Day Pass:

The One-Day Pass (¥2500) or Two-Day Pass (¥3500) entitles foreign travellers to unlimited rides on the Shimabara Railway, Shimatetsu Bus and Shimatetsu Ferry. It is also valid for buses going to and from Nagasaki Airport.

### Where to buy:

The passes are available at Nagasaki Airport, Isahaya Station, Shimabara Station, Shimabara Port, Kuchinotsu Port, Shimatetsu Unzen Bus Terminal, Shimatetsu Obama Bus Terminal, Isahaya Terminal Hotel, and other manned station on the Shimabara Railway.





島原城

## 19 SHIMABARA CASTLE

With Mt Unzen to one side and the Ariake Sea to the other, Shimabara Castle offers a great view over the city of Shimabara. Try on traditional Japanese armor and then head to the observation deck on the top floor. Inside, the castle has become a museum featuring relics and information on Shimabara's past, including details on the Shimabara Rebellion – the catalyst leading to the tightening of Japan's isolation policy. Cherry blossoms and irises bloom here in spring, followed by lotus flowers in the summer.

TRAIN to Shimabara Sta.



鯉の泳ぐまち

## 20 CITY OF SWIMMING CARP

The City of Swimming Carp has been carefully preserved by the locals for generations. This picturesque Japanese castle town is known for its natural spring water, and colorful carp that swim in the city canals. One can enjoy a freshly brewed cup of green tea using natural spring water at Shimeiso Spring Garden; a beautiful traditional style villa built over a large spring water pond.



雲仙地獄

## 21 UNZEN-JIGOKU (Unzen Hell)

Watch hot water springs and gas spout out from the ground, filling the air with the smell of sulfur, as you take a leisurely stroll through the parting white steam. As one marvels at Mother Nature at work at this hotspot of volcanic activity, the beauty is further enhanced by the songs of wild birds calling from afar. This area is one of Japan's most famous hot spring resorts and was the country's first resort targeted at foreign guests escaping the summer heat of the coastal areas.

BUS from Nagasaki Sta., Isahaya Sta. or Nagasaki Airport



小浜温泉

## 22 OBAMA ONSEN (Obama Hot spring)

The hot springs of Obama come out of the ground at a scalding 105°C and steam rises up from vents and drains all over the town. You can even have your food cooked naturally by the steam of the hot springs. In contrast, there are also cold fresh water springs in the town, including one that is naturally carbonated. At the end of the day, head to the 105 meter long "Hottofutto 105" natural foot spa to relax your tired feet and watch the sun set over Tachibana Bay.



武家屋敷

## 23 Old Samurai Houses

On the west side of Shimabara Castle, three old samurai residences (Shinozuka, Yamamoto and Torita) have been carefully preserved, and are open to the public. The picturesque scenery is complete with spring water flowing through a canal in the middle of the street. Take a stroll through this historical area for a glimpse of a samurai's life back in the Edo period.

TRAIN to Shimabara Sta.



雲仙岳災害記念館

## 24 UNZEN DISASTER MEMORIAL HALL

The only museum in the world where one can experience a simulated volcanic eruption, and learn about the damage caused by the disaster and the efforts for recovery. In addition, The Memorial Park of Houses Destroyed by the Debris Flow is located nearby, which exhibits 11 houses buried by the pyroclastic flow during the volcanic eruption of Mount Unzen on September 8, 1992.



仁田峠

## 25 NITA PASS, Unzen

These mountains are famous for their azaleas in the spring, vibrant green hues in the summer, crimson leaves in the fall, and frosty fog in the winter. Take the gondola to the peak of Nita Pass and soak in the view. A brand new trekking path allows hikers to bask in the presence of beautiful mountain flowers and wild birds, and to be greeted by the stunning view of Mt. Heisei Shinzan, newly shaped by the 1990 Fugendake eruption.



BUS from Nagasaki Sta., Isahaya Sta. or Nagasaki Airport



# SHIMABARA RAILWAY

URL <http://www.shimatetsu.co.jp/> (Japanese)

ISAHAYA - SHIMABARA KO

ISAHAYA	諫早		650	717	743	804	850	923	1008	1029	1048	1148	1348
HON-ISAHAYA	本諫早	605	655	722	748	810	854	928	1012	1032	1052	1152	1352
SAIWAI	幸	607	657	724	751	813	857	930	↓		1055	1155	1355
ONO	小野	610	700	727	754	816	900	933	↓		1058	1158	1358
KANTAKUNO-SATO	干拓の里	612	702	729	756	817	902	935	↓		1100	1200	1400
AINO	愛野	623	715	748	807	832	913	950	1024		1113	1213	1413
AZUMA	吾妻	631	722	755	814	838	920	956	1030		1120	1220	1420
KOJIRO	神代	645	736	811	831	854	936	1010	1044		1136	1236	1436
TAIRA	多比良	650	741	816	836	859	941	1015	1049		1141	1241	1441
SHIMABARA	島原	708	759	835	854	918	1000	1034	1103		1200	1300	1500
REIKYU KOEN TAIKUKAN	重丘公園体育館	710	802	837	857	920	1002	1037	1106		1202	1302	1502
SHIMABARA-FUNATSU	島原船津	714	805	840	859	923	1006	1039	1108		1207	1307	1507
SHIMABARA-KO	島原港	717	808	843	902	926	1008	1042	1110		1210	1310	1510

ISAHAYA	諫早	1448	1548	1649	1731	1752	1817	1848	1919	2009	2059	2136	2215
HON-ISAHAYA	本諫早	1452	1552	1655	1735	1757	1821	1853	1923	2012	2108	2139	2218
SAIWAI	幸	1455	1555	1657	1738	1800	1824	1855	1926	2014	2110	2142	2221
ONO	小野	1458	1558	1700	1741	1802	1827	1858	1928	2017	2113	2145	2224
KANTAKUNO-SATO	干拓の里	1500	1600	1702	1743	1804	1828	1900	1930	2019	2115	2147	2225
AINO	愛野	1513	1613	1715	1755	1816	1846	1917	1948	2031	2127	2158	2237
AZUMA	吾妻	1520	1620	1726	1802	1823	1854	1924	1955	2039	2134	2204	2244
KOJIRO	神代	1536	1635	1740	1816	1840	1909	1938	2009	2053	2148	2218	2258
TAIRA	多比良	1541	1640	1745	1821	1845	1914	1943	2018	2058	2153	2224	2303
SHIMABARA	島原	1600	1659	1804	1840	1904	1933	2002	2037	2117	2212	2242	2322
REIKYU KOEN TAIKUKAN	重丘公園体育館	1603	1701	1807	1842	1906	1935	2004	2039	2119	2214	2244	2324
SHIMABARA-FUNATSU	島原船津	1606	1705	1810	1845	1912	1938	2007	2045	2124	2215	2246	2325
SHIMABARA-KO	島原港	1609	1707	1813	1847	1915	1940	2009	2048	2127	...	...	...

SHIMABARA KO - ISAHAYA

SHIMABARA-KO	島原港	...	...	...	657	739	824	854	959	1103	1204	1304	1404
SHIMABARA-FUNATSU	島原船津	549	609	640	701	743	827	859	1004	1108	1208	1308	1408
REIKYU KOEN TAIKUKAN	重丘公園体育館	551	611	642	703	745	829	901	1007	1111	1211	1311	1411
SHIMABARA	島原	554	614	645	707	748	834	904	1010	1114	1214	1314	1414
TAIRA	多比良	610	630	703	724	806	848	923	1030	1130	1230	1330	1430
KOJIRO	神代	615	635	708	729	811	854	929	1035	1136	1236	1336	1436
AZUMA	吾妻	630	651	722	742	826	906	943	1050	1150	1250	1350	1450
AINO	愛野	636	658	728	749	833	913	950	1057	1157	1257	1357	1457
KANTAKUNO-SATO	干拓の里	647	709	739	801	844	↓	1001	1108	1208	1308	1408	1508
ONO	小野	649	711	741	803	846	↓	1003	1110	1210	1310	1410	1510
SAIWAI	幸	652	714	744	806	849	↓	1005	1113	1213	1313	1413	1513
HON-ISAHAYA	本諫早	657	721	747	809	853	927	1011	1116	1216	1316	1416	1516
ISAHAYA	諫早	700	723	750	812	856	929	1014	1119	1219	1319	1419	1519

SHIMABARA-KO	島原港	1504	1539	1600	1638	1658	1732	1804	1828	1909	1950	2041	2120
SHIMABARA-FUNATSU	島原船津	1508	1543	1605	1641	1703	1735	1809	1832	1915	1954	2048	2129
REIKYU KOEN TAIKUKAN	重丘公園体育館	1511	1545	1607	1644	1705	1737	1811	1834	1917	1956	2050	2131
SHIMABARA	島原	1514	1548	1611	1647	1708	1741	1815	1839	1920	2001	2053	2134
TAIRA	多比良	1530	1607	1627	1706	1725	1759	1835	1859	1943	2019	2112	2153
KOJIRO	神代	1536	1612	1635	1711	1730	1805	1840	1909	1948	2024	2118	2158
AZUMA	吾妻	1550	1629	1649	1726	1747	1823	1854	1924	2004	2039	2134	2213
AINO	愛野	1557	1635	1655	1732	1755	1829	1901	1931	2010	2045	2140	2219
KANTAKUNO-SATO	干拓の里	1608	1647	1709	1749	1811	1841	1912	1942	2026	2057	2153	2231
ONO	小野	1610	1648	1711	1751	1813	1843	1914	1944	2027	2058	2154	2233
SAIWAI	幸	1613	1651	1714	1754	1816	1846	1917	1947	2030	2101	2157	2236
HON-ISAHAYA	本諫早	1616	1656	1718	1758	1820	1852	1922	1950	2035	2106	2201	2239
ISAHAYA	諫早	1619	1658	1720	1801	1823	1854	1925	1953	2038	2109	2203	2242

Timetable as of October 2019. The information above is subject to change.  
Please contact information centers for updated information. (Telephone numbers are on the back)

## MODEL COURSE



# SHIMABARA PENINSULA



### Day 1

**1** NextSpot  
Bus 30min **P23**

Hot Foot 105

**2** NextSpot  
Taxi 15min **P23**

Unzen Hell

**3** NextSpot  
Taxi 15min **P24**

Nita Pass

### Unzen Hot Spring Hotel



Lunch  
Guzoni



Lunch  
Shimabara Somen

### Day 2

**4** NextSpot  
Walk 1min **P23**

Shimeiso Spring Garden

**5** NextSpot  
Walk 15min

Yuusuikan  
(Kanzarashi-Making)

**6** NextSpot  
Walk 10min **P23**

Shimabara Castle

**7**

Old Samurai Warriors'  
Houses



Kanzarashi

SHIMABARA PENINSULA

MODEL COURSE

Time Table

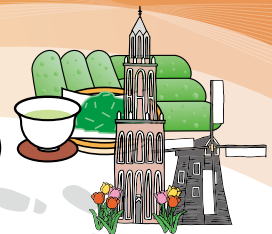
SHIMABARA PENINSULA



# NAGASAKI CITY



# SASEBO & HIRADO



## Day 1

**1** NextSpot  
Tram Walk  
**P13**

Gunkanjima

**2** NextSpot  
Walk 5min  
**P13**

Oura Cathedral

**3** NextSpot  
Tram 15min  
**P13**

Glover Garden

**4**  
**P13**

Shinchi Chinatown & Shiambashi

## Lunch



Champon



Nagasaki Wagyu

## Day 2

**5** NextSpot  
Tram 20min  
**P14**

Atomic Bomb Related Sites

**6** NextSpot  
Walk 10min

Nagasaki Museum of History and Culture

**7** NextSpot  
Tram 10min

Temple Street & Meganebashi Bridge

**8** NextSpot  
BUS 25min  
**P13**

Dejima

**9** CableCar 5min

Mt. Inasa Sunset & Night View

## Day 1

**1** NextSpot  
Walk 5min  
**P18**

Kujukushima (Sailing)

**2** NextSpot  
Taxi 6min  
**P17**

Umi Kirara (Kujukushima Aquarium)

**3** NextSpot  
Walk 10min

Mori Kirara (Zoological & Botanical Garden)

**4** PhotoSpot

Ishidake Observatory

**Lunch**

Sasebo Burger

Hirado Fresh Seafood

## Day 2

**5** NextSpot  
Walk 20min  
**P19**

Hirado Castle

**6** NextSpot  
Walk 5min

Hirado Dutch Trading Post

**7** NextSpot  
Walk 5min

Hirado Shitamachi (Downtown)

**8** NextSpot  
Walk 15min

Matsura Historical Museum

**9** PhotoSpot  
**P19**

A View of a Christian Church and Japanese Temples



# THE OUTER ISLANDS

## Overview

With the most inhabited islands in all of Japan, some of the best beaches in the country and history dating back to the country's beginning, the Outer Islands should not be missed. Even with several of the islands being a little remote, there are ferries and flights that can take you to these breathtaking locations from Nagasaki, Fukuoka and even Korea!

## GOTO ISLANDS

五島

The five islands of Fukue, Hisaka, Naru, Wakamatsu and Nakadori, along with over 140 smaller islands make up the Goto Archipelago. These idyllic islands are known for their beautiful beaches and refreshing mountain-top views, as well as camellia oil products, Goto udon, and delicious seafood. Steeped in Christian history, over 50 churches and Hidden Christian sites can also be found here.



## IKI 壱岐

Iki, located in the north of Kyushu, is blessed with abundant pristine nature and the highest density of Shinto shrines, numbering at 150 (registered shrines). Learn about ancient Japan at the Ikoku Museum or explore a 2000 year old settlement. Iki is also a treasure trove of delicacies, boasting fresh seafood and locally brewed shochu liquor.



## TSUSHIMA

対馬

The closest place in Japan to South Korea, Tsushima has played an important role in corresponding with the Korean Peninsula since ancient times and is a place of great historical value. Forests cover 89 percent of the island, and it is a fantastic destination for nature-lovers. You might even spot an endangered Tsushima Leopard Cat. Tsushima is only an hour's boat ride away from Busan, Korea.



## ✈️ ORC Oriental Air Bridge

Nagasaki Airport ⇄ Goto Islands  
 Nagasaki Airport ⇄ Iki Island  
 Nagasaki Airport ⇄ Tsushima Island  
 Fukuoka Airport ⇄ Goto Islands  
<https://www.ana.co.jp/en/> (English)  
<https://www.ore-air.co.jp/> (Japanese)

## 🚢 Kyushu Yusen

Hakata Port (Fukuoka Pref.) ⇄ Iki Island ⇄ Tsushima Island  
 Iki Island ⇄ Karatsu Port (Saga Pref.)  
 Tsushima Island ⇄ Hakata Port (Fukuoka Pref.)  
<http://www.kyu-you.co.jp/en/> (English)

## 🚢 Kyushu Shosen

Nagasaki Port ⇄ Goto Islands  
 Sasebo Port ⇄ Ojika Island ⇄ Goto Islands  
<http://www.kyusho.co.jp/> (Japanese)



## OJIKA

小値賀町

One of Japan's most beautiful villages, with wonderfully preserved old houses lining the streets, Ojika is also well-known for its hospitality. The adjacent Nozaki Island, now only inhabited by deer, has been turned into a nature-learning village and is accessible by boat. It is the perfect place for the inquisitive explorer.

## 🚢 Goto Sangyo Kisen

Nagasaki Port ⇄ Goto Islands  
 Sasebo Port ⇄ Goto Islands  
<http://www.goto-sangyo.co.jp/> (Japanese)

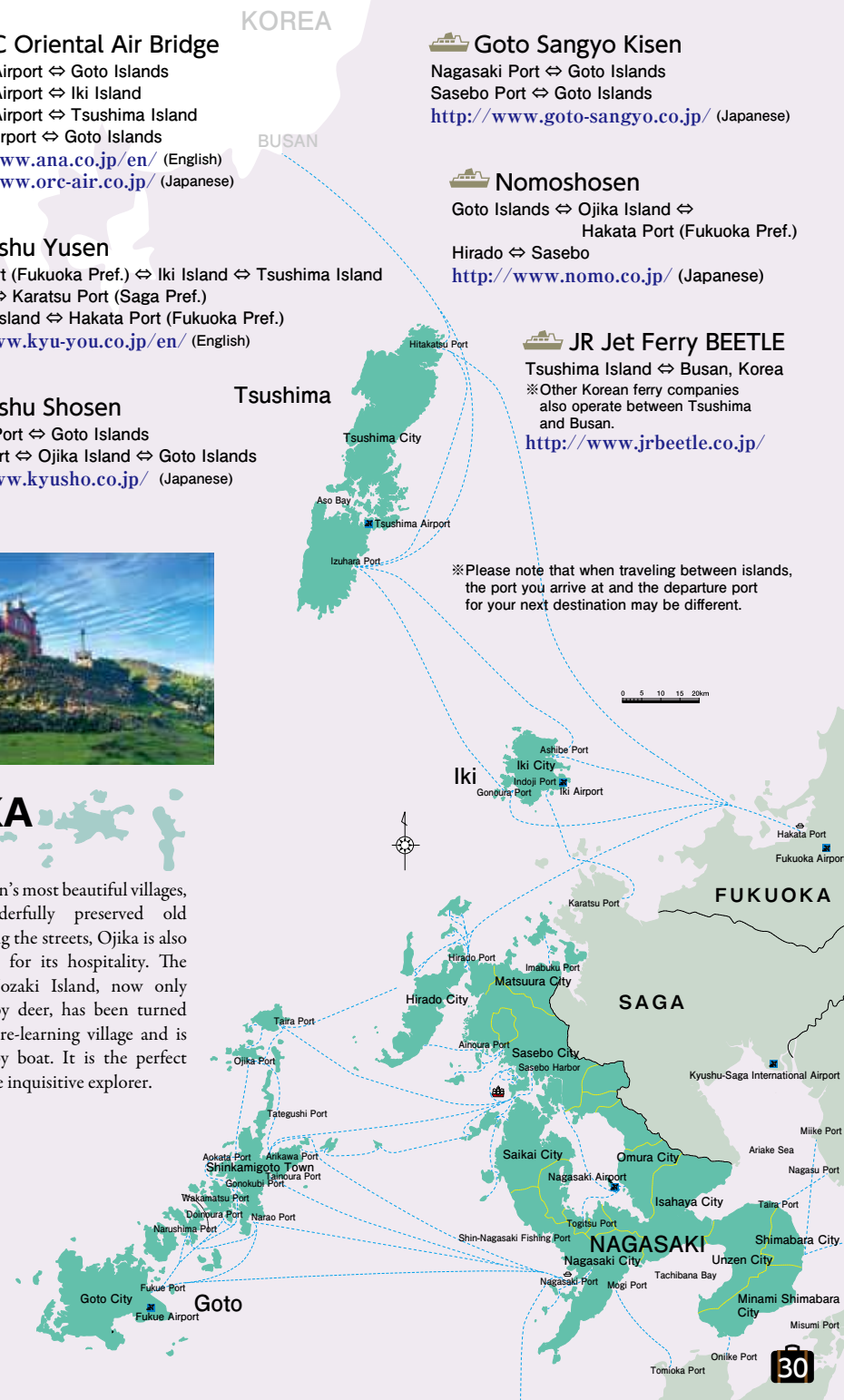
## 🚢 Nomoshosen

Goto Islands ⇄ Ojika Island ⇄ Hakata Port (Fukuoka Pref.)  
 Hirado ⇄ Sasebo  
<http://www.nomo.co.jp/> (Japanese)

## 🚢 JR Jet Ferry BEETLE

Tsushima Island ⇄ Busan, Korea  
 ※Other Korean ferry companies also operate between Tsushima and Busan.  
<http://www.jrbeetle.co.jp/>

※Please note that when traveling between islands, the port you arrive at and the departure port for your next destination may be different.



Tourist Attraction

THE OUTER ISLANDS



# GETTING HERE



## FLIGHTS TO NAGASAKI

International flights (from Shanghai, Seoul) or domestic flights (from Tokyo, Osaka or other major cities) to Nagasaki Airport

### International Flights to Nagasaki

Shanghai --- 1 hour 35 minutes  
Hong Kong --- 3 hours

### Domestic Flights to Nagasaki

Tokyo (Narita Airport) --- 2 hours 5 minutes  
Tokyo (Haneda Airport) --- 1 hour 50 minutes  
Nagoya --- 1 hour 25 minutes  
Osaka (Itami Airport, Kansai Airport, Kobe Airport) --- 1 hour 15 minutes  
Okinawa (Naha Airport) --- 1 hour 30 minutes

\*From Nagasaki Airport to JR Nagasaki Station  
--- 40 minutes by bus



## TRAINS TO NAGASAKI

JR Pass Holder? Come to JR Nagasaki Station, a Western terminus Station of Japan Railways.

Tokyo Station --- 7 hours  
Kyoto Station --- 4 hours 50 minutes  
Osaka Station --- 4 hours 30 minutes  
Hiroshima Station --- 3 hours  
Fukuoka (Hakata) Station --- 1 hour 50 minutes



## FLIGHTS TO FUKUOKA

International and domestic flights are available.



## FROM FUKUOKA

2 hours 20 minutes by express bus  
1 hour 50 minutes by JR train from JR Hakata Station (accessible by subway, bus or taxi from Fukuoka Airport)

# Tourist Information Center

AREA	NAGASAKI	NAGASAKI	NAGASAKI	NAGASAKI	SASEBO
NAME	Nagasaki Airport Information Desk	Nagasaki Tourist Information Center (JR Nagasaki Station)	Hidden Christian Sites in the Nagasaki Region Information Centre	Hotel JAL City Nagasaki	Sasebo Tourist Information Center (JR Sasebo Station)
TEL	+81-957-52-5555	+81-95-823-3631	+81-95-823-7650	+81-95-825-2580	+81-956-22-6630
HOURS	7:00-21:45	8:00-20:00	9:30-17:30	24hours	9:00-18:00
WI-FI AVAILABILITY	YES	YES	YES	YES	YES
ENGLISH AVAILABILITY	Full time	Full time	Full time	Part-time	Full time

AREA	HIRADO	OMURA	OBAMA/UNZEN	UNZEN	SHIMABARA
NAME	Michi-no-Eki Ikitukiohashi	Michi-no-Eki Nagasakikaidou Suzutatouge	Obama Onsen Tourism Association	Unzen Onsen Tourist Association	Kumamoto Ferry.,co.ltd Shimabara Branch
TEL	+81-950-53-2927	+81-957-53-6699	+81-957-74-2672	+81-957-73-3434	+81-957-63-8008
HOURS	8:30-17:30 (8:30-18:00 in August)	9:00-18:00 (Closed on the year-end and New Year holidays)	9:00-17:00 Closed from Dec 31 to Jan 1.	9:00-17:00	7:30-17:30
WI-FI AVAILABILITY	NO	YES	NO	YES	NO
ENGLISH AVAILABILITY	Part-time/Limited	Part-time/Limited	Part-time/Limited	Part-time/Limited	Full time

For more information, please visit our website:

[www.discover-nagasaki.com](http://www.discover-nagasaki.com)

English 日本語 中文简体 中文繁体 한국어 FRA ESP NLD ITA

(一社)長崎県観光連盟

**Nagasaki Prefecture Tourism Association**

